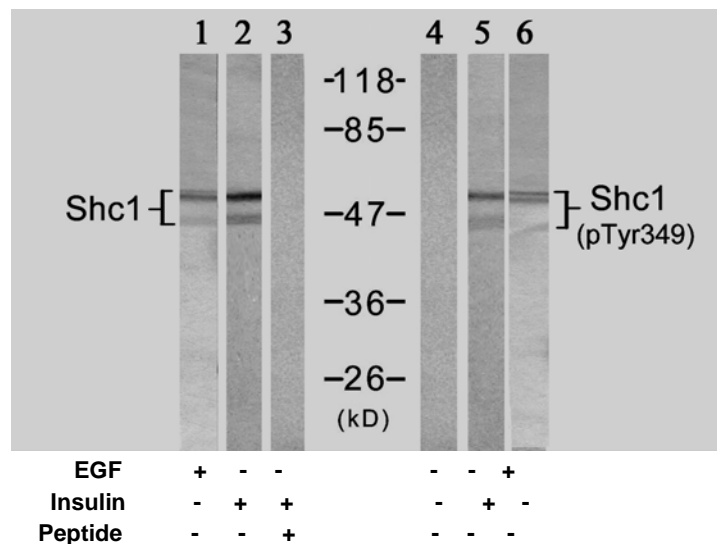


Rabbit anti Shc1 (pTyr349)

- Catalog Number:** pAP11316
Amount: 100µl (for 10 Western Blotting)
Swiss-Prot No. : P29353
Form of Antibody: Rabbit IgG in phosphate buffered saline (without Mg²⁺ and Ca²⁺), pH 7.4, 150mM NaCl, 0.02% sodium azide and 50% glycerol.
Storage/Stability: Store at -20°C/1 year
Immunogen: The antiserum was produced against synthesized phosphopeptide derived from human Shc1 around the phosphorylation site of tyrosine 349 (H-Q-Y^P-Y-N).
Purification: The antibody was affinity-purified from rabbit antiserum by affinity-chromatography using epitope-specific phosphopeptide. The antibody against non-phosphopeptide was removed by chromatography using non-phosphopeptide corresponding to the phosphorylation site.
Specificity/Sensitivity: Shc1 (Phospho-Tyr349) antibody detects endogenous levels of Shc1 only when phosphorylated at tyrosine 349.
Reactivity: Human, Mouse
Applications: WB: 1:500~1:1000
References: Tramont P, et al. (2006) Mol Cell Biol; 26(23): 9035-9044.
 Patrussi L, et al. (2005) Oncogene; 24(13): 2218-2228
 van der Geer P, et al. (1996) Curr Biol ; 6(11): 1435-1444



Western blot analysis of extracts from 293 cells, using Shc1 (Ab-349) Antibody (AP21316, Lane 1, 2 and 3) and Shc1 (Phospho-Tyr349) Antibody (pAP11316, Lane 4, 5 and 6).

For Research Use Only

Contact & Ordering Information: Angio-Proteomie, 11 Park Drive, Suite 12, Boston, MA 02215, USA. Fax: (480) 247-4337, angioproteomie@gmail.com